

Ox Bodies Inc. Installation Instructions

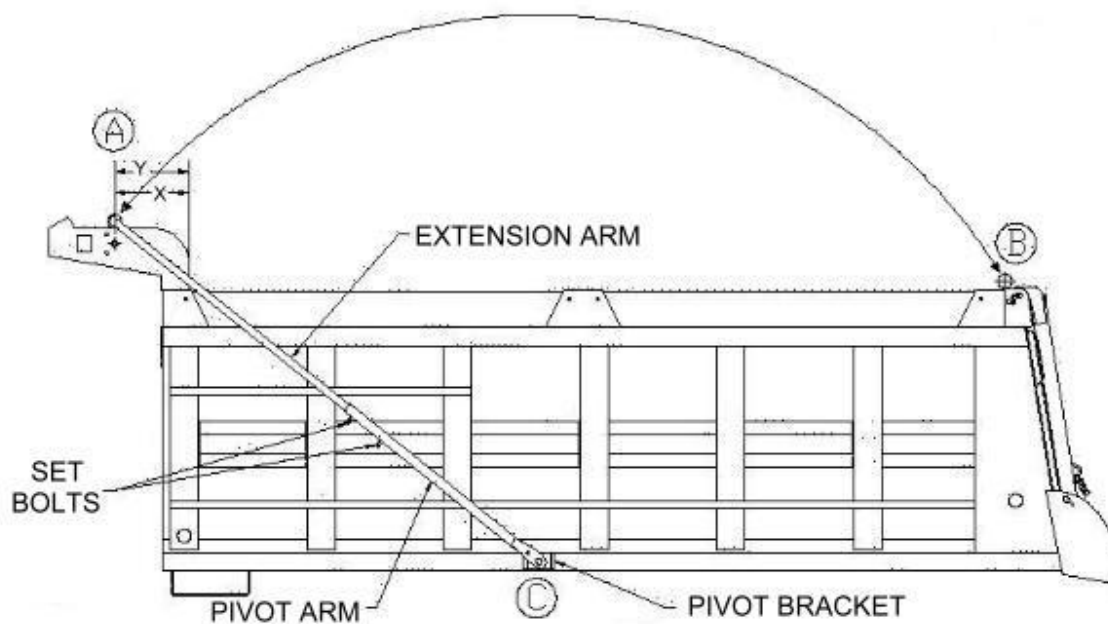
TARP SYSTEMS INSTALLATION INSTRUCTIONS

Installation of electric tarp system.

Installation of semi-automatic tarp systems

NOTE Y: (electric controls)
electric motor & roller assembly are located 21 inches
(on 36" & 42" cabshields) 16 inches (on 24" cabshields)
from rear of cabshield gusset.

NOTE B: tarp pipe rests in front
of tailgate to allow air
to escape from underneath
tarp cover.



NOTE X: (semi-automatic control)
front roller assembly is
located 12" from rear of
cabshield gusset

NOTE C: position pivot bracket by measuring until
point AC and BC become the same dimension
pivot bracket mounts with keyed slot in
shaft pointing downward.

© 2002 Ox Bodies, Inc., All Rights Reserved

Design/Hosting by [Dixie Land Services/MW Communications](#)