

Standard Features



FRONT STOP

The front and rear stops help lock the container for forward and backward motion.



REAR STOP



"Plug n' Play" wiring system eliminates crossed wires, loose connections, corrosion and splices; allows for easy light replacement



OIL RESERVOIR

Oil reservoir is filter cart ready, reducing maintenance costs



Hoist frames are huck bolted to chassis, providing unmatched strength and durability (factory mount only)



CONTAINER HOOKS

Container Jib Hook meets DOT requirements for front container securement



TOOL BOX

The optional tool box comes in 20" x 16" x 24" long, 48" long steel and 36" long poly box



REAR ROLLER

Optional Rear rollers aid in loading and unloading the container



REESE RECEIVER / PINTLE HOOK

Option- 2" receiver 3,000lb vertical load, 16,000lb gross trailer weight with LED light bumper. Pintle hook option comes with gladhands. The truck must have a trailer package at the rear (20k vertical and 100k tow rating)

TRUCK SPECIFICATIONS BY MODEL

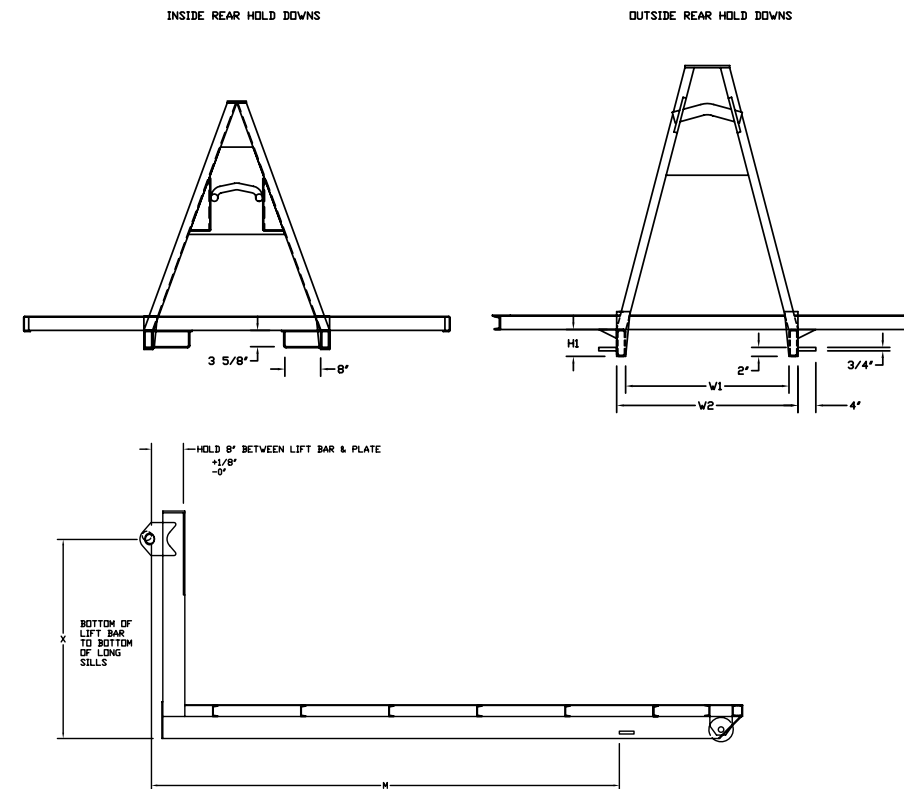
ALL MODELS EXCEPT U9-HK-84 & U9-HK-120 ONLY

- Front axle: 8,000 lbs. (min.) capacity with power steering
- Rear axle: 18,000 lbs. (min.) capacity
- 50,000 psi or more chassis frames
- Minimum section modulus = 15.5 in.³

MODELS U9-HK-84 & U9-HK-120 ONLY

- Front axle: 6,000 lbs. (min.) capacity with power steering
- Rear axle: 12,000 lbs. (min.) capacity
- 50,000 psi or more chassis frames
- Minimum section modulus = 10.7 in.³

CONTAINER REQUIREMENTS



Compatible hoist model	Lift bar diameter	Hook height	Distance from back of lift bar to front of rear hold down		Rear hold downs (inside/outside)	Inside width of long sills (min.)	Outside width of long sills (max.)	Long sill height (min.)
		X dim.	M dim.	W1 dim.		W2 dim.	H1 dim.	
U9-HK	1 1/2"	35 1/2" - 36"	95 1/4"		Inside	37 1/2"	41 1/2"	4 1/4"
U13-HK U20/13 HK	1 1/2"	35 1/2" - 36"	138"		Inside	37 1/2"	41 1/2"	4 1/4"
U20/13 HK U20-HK U30-HK	2 1/2"	54"	127 1/2"		Outside	36 1/2"	41 3/4"	6"

SINGLE PIVOT HOOK HOIST



Tel: 800.285.0666 | sales@wastequip.com | www.wastequip.com



» **9,000 to 30,000 lb. capacity**

» **Container lengths from 6' to 20'**

Galbreath single pivot hook hoists features a universal fit for nearly any chassis. The simple design of the single pivot hook hoist means fewer moving parts and less maintenance.

SINGLE PIVOT SERIES

STANDARD FEATURES

Ease of operation

- Centered cab-mount Power Tower
- Plug n' Play wiring system
- Roller stools
- Standard inside and outside air controls

Safety

- Heavy-duty safety props
- Backup alarm and hoist up alarm with signal light on dash
- Stationary rear hold downs
- Optional hoist up speed-limiting parameters

Quality

- Lean manufacturing process, along with engineering, solid modeling and stress analysis testing, ensure quality, consistent product every time
- Customized engineering layouts are created based on customers' chassis to ensure compatibility

Durability

- 3 micron filtration system with dual viscosity oil
- Two part epoxy primer and paint*
- Hoist frames are huck bolted to chassis*
- Steel oil reservoir is filter cart ready
- Bumper with recessed LED lighting
- Direct mount pump
- Rubber mounted sealed lights
- Pivot joints feature hardened steel bushings and grease fittings
- Outboard supported upper lift shaft
- Lifetime warranty on frame and two-year warranty on hydraulics

AVAILABLE OPTIONS

- Lift axles
- Tires and rims
- Hydraulic/wet kits
- Air compressors for non-air chassis
- Additional lighting
- Bumpers, pintle hooks and reese hitches
- Various fender selections
- Toolboxes



Tel: 800.285.0666 | sales@wastequip.com | www.wastequip.com

Wastequip is the leading North American manufacturer of waste and recycling equipment for collecting, processing and transporting recyclables and solid or liquid waste. September 2012 © Wastequip, all rights reserved. Specifications subject to improvement without notice. Equipment displayed should be operated by properly trained personnel. Operators should become familiar with OSHA, ANSI and any other applicable standards or laws for using this equipment. Improper use, misuse, or lack of maintenance could cause injury to people and/or property. Photos used in the literature are illustrative only. We assume no liability or responsibility for proper training/operation of equipment not manufactured by Wastequip. We reserve the right to make changes at any time without notice. Information contained within this literature is intended to be the most accurate available at time of printing.

